

# TEST REPORT

**CLIENT** VTC ELECTRONICS (SHANGHAI) CORP  
**ADDRESS** BUILDING 5, LANE 258,YINLONG ROAD, JIADING DISTRICT, SHANGHAI

**THE FOLLOWING SUBMITTED SAMPLE(S) WAS/WERE IDENTIFIED BY/ON BEHALF OF THE CLIENT AS**

**Sample Name** CCTV Camera  
**Model No.** KB-NCADB3AE/009-0035839/009-0035840

**SUMMARY**

**Date Received** Aug.15, 2019  
**Test Period** Aug.15, 2019 to Sep.18, 2019  
**Test Request** As specified by client, the following tests and assessments were conducted.

No.	Directive	Test Item	Conclusion
1.	European Council Directive 2011/65/EU on the Restriction of the Use of Certain Hazardous Substances in Electrical and Electronic Equipment(RoHS)	Pb/Cd/Hg/Cr(VI)/PBB/PBDE	PASS
2.	European Council Directive(EU)2015/863 Amending Annex II to Directive 2011/65/EU of the European Parliament and of the Council as regards the list of restricted substances	DBP, BBP, DEHP, DIBP	PASS

For more information about the test, please refer to the following pages.

Compiled By Tan Fengjuan

Checked By Zhang Kun

Approved by Huo Junjie



Shanghai Lelangtek Testing Technology Co., Ltd.(2<sup>nd</sup> Floor, Building 4, No.158, Jinfeng Road, Pudong, Shanghai)

This document is issued by the Company subject to its General Conditions of Service printed overleaf. Attention is drawn to the limitation of liability. Indemnification and jurisdiction issues defined therein. Any holder of this document is advised that information contained hereon reflects the Company's finding at the time of its intervention only and within the limits of Client's instructions, if any. The Company's sole responsibility transaction documents. This documents cannot be reproduced except in full, without prior written approval of the Company. Any unauthorized alteration, forgery or falsification of the content or appearance of this document is unlawful and offenders may be prosecuted to the fullest extent of law, Unless otherwise stated the results shown in this test report refer only to the sample(s) tested.

Note: All test results are only valid for the samples being tested. This test report shall not be reproduced except in full, without the written approval of the testing laboratory The Dates for internal quality control data reference only  
 Address: 2<sup>nd</sup> Floor, Building 4, No.158, Jinfeng Road, Pudong District, Shanghai, China (201201) Tel: +86 21 5838-0071 Fax: +86 21 5838-0083

**SAMPLE PHOTO**

CCTV Camera



Lelangtek authenticated the photo on original report only

This document is issued by the Company subject to its General Conditions of Service printed overleaf. Attention is drawn to the limitation of liability. Indemnification and jurisdiction issues defined therein. Any holder of this document is advised that information contained hereon reflects the Company's finding at the time of its intervention only and within the limits of Client's instructions, if any. The Company's sole responsibility transaction documents. This documents cannot be reproduced except in full, without prior written approval of the Company. Any unauthorized alteration, forgery or falsification of the content or appearance of this document is unlawful and offenders may be prosecuted to the fullest extent of law, Unless otherwise stated the results shown in this test report refer only to the sample(s) tested.

Note: All test results are only valid for the samples being tested. This rest report shall not be reproduced except in full, without the written approval of the testing laboratory The Dates for internal quality control data reference only

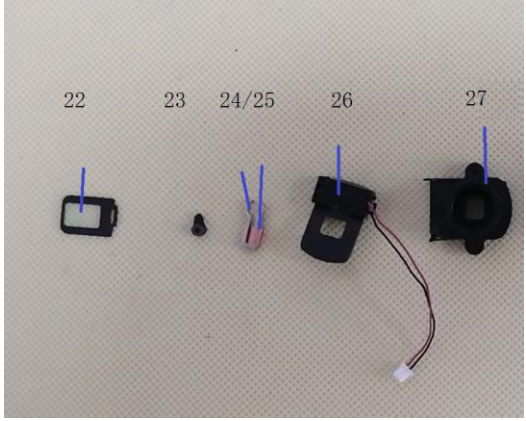
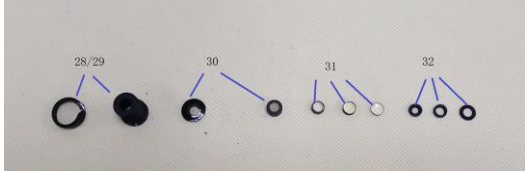
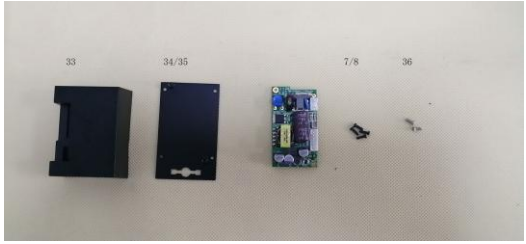
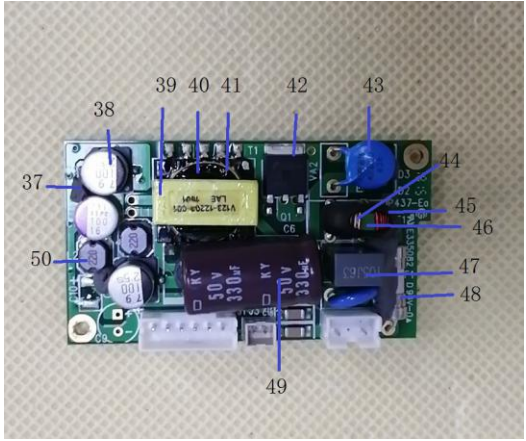
Address: 2<sup>nd</sup> Floor, Building 4, No.158, Jinfeng Road, Pudong District, Shanghai, China (201201) Tel: +86 21 5838-0071 Fax: +86 21 5838-0083

**THE LIST OF TEST COMPONENT**

Component No.	Component Description	Material	Picture
1	Black coating	Non-metal	
2	The metal base material	Metal	
3	Black plastic	Non-metal	
4	The label	Non-metal	
5	Black plastic	Non-metal	
6	Copper metal	Metal	
7	Black coating	Metal	
8	The metal base material	Metal	
9	Black component	Non-metal	
10	PCB	Non-metal	
11	White plastic	Non-metal	
12	Silver metal pin	Metal	
13	Black electronic components	Non-metal	
14	Silver capacitance	Non-metal	
15	Black magnet	Non-metal	
16	Light yellow resistance	Non-metal	
17	Light grey resistance	Non-metal	
18	Black electronic components	Non-metal	
19	Black electronic components	Non-metal	
20	Brown electronic element	Non-metal	
21	Black electronic components	Non-metal	
22	Transparent glass	Non-metal	
23	Black plastic	Non-metal	
24	Silver metal	Metal	
25	Copper enamelled wire	Non-metal	
26	Black plastic	Non-metal	
27	Black plastic	Non-metal	
28	Black coating	Non-metal	
29	The metal base material	Metal	
30	Brown glass	Non-metal	

This document is issued by the Company subject to its General Conditions of Service printed overleaf. Attention is drawn to the limitation of liability. Indemnification and jurisdiction issues defined therein. Any holder of this document is advised that information contained hereon reflects the Company's finding at the time of its intervention only and within the limits of Client's instructions, if any. The Company's sole responsibility transaction documents. This documents cannot be reproduced except in full, without prior written approval of the Company. Any unauthorized alteration, forgery or falsification of the content or appearance of this document is unlawful and offenders may be prosecuted to the fullest extent of law, Unless otherwise stated the results shown in this test report refer only to the sample(s) tested.

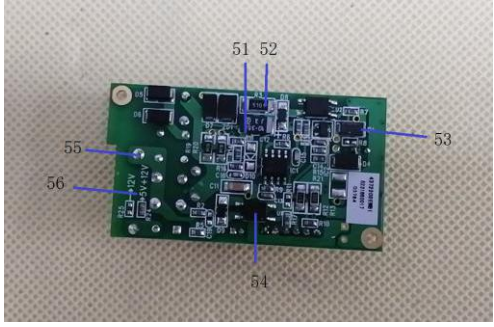
Note: All test results are only valid for the samples being tested. This rest report shall not be reproduced except in full, without the written approval of the testing laboratory The Dates for internal quality control data reference only

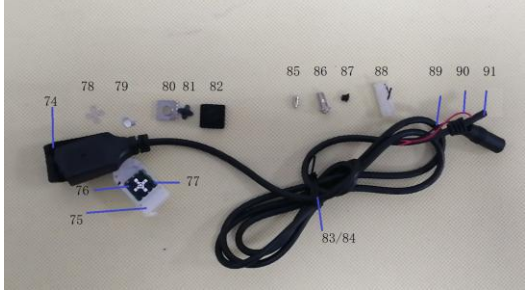
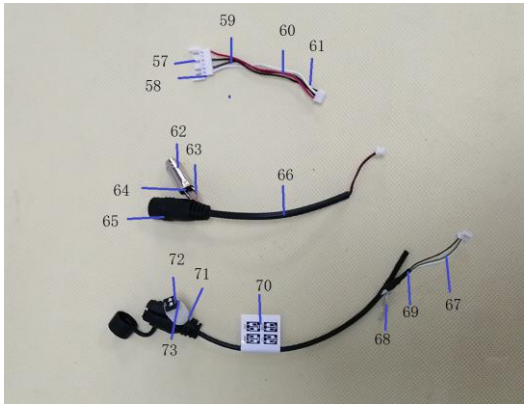
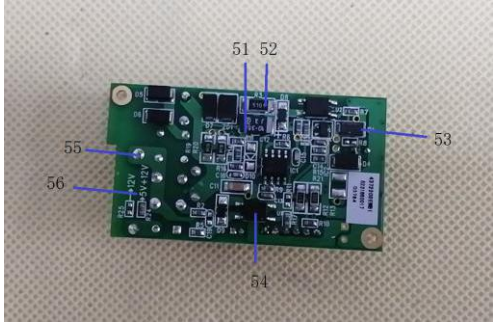
Component No.	Component Description	Material	Picture	
31	Transparent glass	Non-metal		
32	Black plastic	Non-metal		
33	Black plastic	Non-metal		
34	Black coating	Non-metal		
35	The metal base material	Metal		
36	Silver metal	Metal		
37	Grey electronic adhesive	Non-metal		
38	Silver capacitance	Non-metal		
39	Yellow tape	Non-metal		
40	Black magnet	Non-metal		
41	Enameled wire	Non-metal		
42	Black body	Non-metal		
43	Blue resistance	Non-metal		
44	Brown enamelled wire	Non-metal		
45	Black plastic	Non-metal		
46	Blue magnet	Non-metal		
47	Gray capacitance	Non-metal		
48	Ceramic resistor	Non-metal		
49	Brown capacitance	Non-metal		
50	Black magnet	Non-metal		
51	Black electronic components	Non-metal		
52	SMD resistor	Non-metal		
53	Black body	Non-metal		
54	Black electronic components	Non-metal		
55	solder	Metal		
56	PCB	Non-metal		
57	Silver metal pin	Metal		
58	White plastic	Non-metal		
59	The black line skin	Non-metal		
60	Red skin	Non-metal		
61	Peel white line	Non-metal		
62	Silver metal	Metal		
63	Silver metal terminal	Metal		
64	Black plastic	Non-metal		

This document is issued by the Company subject to its General Conditions of Service printed overleaf. Attention is drawn to the limitation of liability. Indemnification and jurisdiction issues defined therein. Any holder of this document is advised that information contained hereon reflects the Company's finding at the time of its intervention only and within the limits of Client's instructions, if any. The Company's sole responsibility transaction documents. This documents cannot be reproduced except in full, without prior written approval of the Company. Any unauthorized alteration, forgery or falsification of the content or appearance of this document is unlawful and offenders may be prosecuted to the fullest extent of law, Unless otherwise stated the results shown in this test report refer only to the sample(s) tested.

Note: All test results are only valid for the samples being tested. This rest report shall not be reproduced except in full, without the written approval of the testing laboratory The Dates for internal quality control data reference only



Component No.	Component Description	Material	Picture
65	Black plastic	Non-metal	
66	The black line skin	Non-metal	
67	Green line skin	Non-metal	
68	The aluminum foil	Metal	
69	Black plastic	Non-metal	
70	White plastic	Non-metal	
71	White plastic	Non-metal	
72	Black plastic	Non-metal	
73	solder	Metal	
74	Black plastic	Non-metal	
75	White plastic	Non-metal	
76	Black plastic	Non-metal	
77	PCB	Non-metal	
78	Silver metal	Metal	
79	Silver metal shrapnel	Metal	
80	Silver metal	Metal	
81	Black plastic	Non-metal	
82	Black plastic	Non-metal	
83	Black plastic	Non-metal	
84	Silver metal	Metal	
85	Silver metal	Metal	
86	Silver metal	Metal	
87	Black plastic	Non-metal	
88	White plastic	Non-metal	
89	The black line skin	Non-metal	
90	Red skin	Non-metal	
91	The black line skin	Non-metal	
92	Black plastic	Non-metal	
93	solder	Metal	
94	Silver metal	Metal	
95	White plastic	Non-metal	
96	Black plastic	Non-metal	
97	Copper metal	Metal	
98	Black casing	Non-metal	
99	Red plastic	Non-metal	



This document is issued by the Company subject to its General Conditions of Service printed overleaf. Attention is drawn to the limitation of liability. Indemnification and jurisdiction issues defined therein. Any holder of this document is advised that information contained hereon reflects the Company's finding at the time of its intervention only and within the limits of Client's instructions, if any. The Company's sole responsibility transaction documents. This documents cannot be reproduced except in full, without prior written approval of the Company. Any unauthorized alteration, forgery or falsification of the content or appearance of this document is unlawful and offenders may be prosecuted to the fullest extent of law, Unless otherwise stated the results shown in this test report refer only to the sample(s) tested.

Note: All test results are only valid for the samples being tested. This rest report shall not be reproduced except in full, without the written approval of the testing laboratory The Dates for internal quality control data reference only

Component No.	Component Description	Material	Picture
100	Silver metal pin	Metal	
101	White glue	Non-metal	
102	Silver wire core	Metal	
103	The black line skin	Non-metal	
104	Red skin	Non-metal	
105	Black plastic	Non-metal	
106	Peel white line	Non-metal	
107	Black magnet	Non-metal	
108	Black plastic	Non-metal	
109	White plastic	Non-metal	
110	Copper wire core	Metal	
111	The orange line skin	Non-metal	
112	Yellow line skin	Non-metal	
113	The black line skin	Non-metal	
114	Brown leather line	Non-metal	
115	Red skin	Non-metal	
116	Black casing	Non-metal	
117	White plastic	Non-metal	
118	Grey metal	Metal	
119	Black metal	Metal	
120	Silver metal	Metal	

This document is issued by the Company subject to its General Conditions of Service printed overleaf. Attention is drawn to the limitation of liability. Indemnification and jurisdiction issues defined therein. Any holder of this document is advised that information contained hereon reflects the Company's finding at the time of its intervention only and within the limits of Client's instructions, if any. The Company's sole responsibility transaction documents. This documents cannot be reproduced except in full, without prior written approval of the Company. Any unauthorized alteration, forgery or falsification of the content or appearance of this document is unlawful and offenders may be prosecuted to the fullest extent of law, Unless otherwise stated the results shown in this test report refer only to the sample(s) tested.

Note: All test results are only valid for the samples being tested. This rest report shall not be reproduced except in full, without the written approval of the testing laboratory The Dates for internal quality control data reference only

## TEST RESULT

Component No.	Pb	Cd	Hg	Cr(VI)	PBBs	PBEDs	DBP, BBP, DEHP, DIBP	Conclusion
1	BL	BL	BL	BL	BL	BL	ND*	Pass
2	ND*	BL	BL	BL	--	--	--	Pass
3	BL	BL	BL	BL	BL	BL	ND*	Pass
4	BL	BL	BL	BL	BL	BL	ND*	Pass
5	BL	BL	BL	BL	BL	BL	ND*	Pass
6※2	3.13×10 <sup>4</sup> *	BL	BL	BL	--	--	--	Pass
7	BL	BL	BL	BL	--	--	--	Pass
8	BL	BL	BL	BL	--	--	--	Pass
9	BL	BL	BL	BL	BL	BL	ND*	Pass
10	BL	BL	BL	BL	ND*	ND*	ND*	Pass
11	BL	BL	BL	BL	ND*	ND*	ND*	Pass
12	BL	BL	BL	BL	--	--	--	Pass
13	BL	BL	BL	BL	BL	BL	ND*	Pass
14	BL	BL	BL	BL	BL	BL	ND*	Pass
15	BL	BL	BL	BL	BL	BL	ND*	Pass
16	BL	BL	BL	BL	BL	BL	ND*	Pass
17	BL	BL	BL	BL	BL	BL	ND*	Pass
18	BL	BL	BL	BL	BL	BL	ND*	Pass
19	BL	BL	BL	BL	BL	BL	ND*	Pass
20	BL	BL	BL	ND*	BL	BL	ND*	Pass
21	BL	BL	BL	BL	BL	BL	ND*	Pass
22	BL	BL	BL	BL	BL	BL	ND*	Pass
23	BL	BL	BL	BL	ND*	ND*	ND*	Pass
24	BL	BL	BL	BL	--	--	--	Pass
25	BL	BL	BL	BL	BL	BL	ND*	Pass
26	BL	BL	BL	BL	BL	BL	ND*	Pass
27	BL	BL	BL	BL	ND*	ND*	ND*	Pass
28	BL	BL	BL	BL	BL	BL	ND*	Pass
29	BL	BL	BL	BL	--	--	--	Pass

This document is issued by the Company subject to its General Conditions of Service printed overleaf. Attention is drawn to the limitation of liability. Indemnification and jurisdiction issues defined therein. Any holder of this document is advised that information contained hereon reflects the Company's finding at the time of its intervention only and within the limits of Client's instructions, if any. The Company's sole responsibility transaction documents. This documents cannot be reproduced except in full, without prior written approval of the Company. Any unauthorized alteration, forgery or falsification of the content or appearance of this document is unlawful and offenders may be prosecuted to the fullest extent of law, Unless otherwise stated the results shown in this test report refer only to the sample(s) tested.

Note: All test results are only valid for the samples being tested. This rest report shall not be reproduced except in full, without the written approval of the testing laboratory The Dates for internal quality control data reference only

Component No.	Pb	Cd	Hg	Cr(VI)	PBBs	PBEDs	DBP, BBP, DEHP, DIBP	Conclusion
30	BL	BL	BL	BL	BL	BL	ND*	Pass
31	BL	BL	BL	BL	BL	BL	ND*	Pass
32	BL	BL	BL	BL	BL	BL	ND*	Pass
33	BL	BL	BL	BL	BL	BL	ND*	Pass
34	BL	BL	BL	BL	BL	BL	ND*	Pass
35	BL	BL	BL	BL	--	--	--	Pass
36	BL	BL	BL	BL	--	--	--	Pass
37	BL	BL	BL	BL	BL	BL	ND*	Pass
38	BL	BL	BL	BL	BL	BL	ND*	Pass
39	BL	BL	BL	BL	ND*	ND*	ND*	Pass
40	BL	BL	BL	BL	BL	BL	ND*	Pass
41	BL	BL	BL	BL	ND*	ND*	ND*	Pass
42	BL	BL	BL	BL	BL	BL	ND*	Pass
43	BL	BL	BL	BL	BL	BL	ND*	Pass
44	BL	BL	BL	BL	BL	BL	ND*	Pass
45	BL	BL	BL	BL	BL	BL	ND*	Pass
46	BL	BL	BL	BL	BL	BL	ND*	Pass
47	BL	BL	BL	BL	ND*	ND*	ND*	Pass
48	BL	BL	BL	BL	BL	BL	ND*	Pass
49	BL	BL	BL	BL	BL	BL	ND*	Pass
50	BL	BL	BL	BL	BL	BL	ND*	Pass
51	BL	BL	BL	BL	BL	BL	ND*	Pass
52※1	2.54×10 <sup>3</sup> *	BL	BL	ND*	BL	BL	ND*	Pass
53	BL	BL	BL	BL	BL	BL	ND*	Pass
54	BL	BL	BL	BL	BL	BL	ND*	Pass
55	BL	BL	BL	BL	--	--	--	Pass
56	BL	BL	BL	BL	ND*	ND*	ND*	Pass
57	BL	BL	BL	BL	--	--	--	Pass
58	BL	BL	BL	BL	BL	BL	ND*	Pass
59★3	BL	BL	BL	BL	BL	BL	DBP:317, Others: ND*	Pass

This document is issued by the Company subject to its General Conditions of Service printed overleaf. Attention is drawn to the limitation of liability. Indemnification and jurisdiction issues defined therein. Any holder of this document is advised that information contained hereon reflects the Company's finding at the time of its intervention only and within the limits of Client's instructions, if any. The Company's sole responsibility transaction documents. This documents cannot be reproduced except in full, without prior written approval of the Company. Any unauthorized alteration, forgery or falsification of the content or appearance of this document is unlawful and offenders may be prosecuted to the fullest extent of law, Unless otherwise stated the results shown in this test report refer only to the sample(s) tested.

Note: All test results are only valid for the samples being tested. This rest report shall not be reproduced except in full, without the written approval of the testing laboratory The Dates for internal quality control data reference only



Component No.	Pb	Cd	Hg	Cr(VI)	PBBs	PBEDs	DBP, BBP, DEHP, DIBP	Conclusion
60★3	BL	BL	BL	BL	BL	BL	DBP:150, Others: ND*	Pass
61★2	BL	BL	BL	BL	BL	BL	ND*	Pass
62※2★1	3.46×10 <sup>4*</sup>	BL	BL	BL	--	--	--	Pass
63	BL	BL	BL	BL	--	--	--	Pass
64	BL	BL	BL	BL	ND*	ND*	ND*	Pass
65	BL	BL	BL	BL	BL	BL	ND*	Pass
66	BL	BL	BL	BL	BL	BL	ND*	Pass
67	BL	BL	BL	BL	BL	BL	ND*	Pass
68	BL	BL	BL	BL	--	--	--	Pass
69	BL	BL	BL	BL	BL	BL	ND*	Pass
70	BL	BL	BL	BL	BL	BL	ND*	Pass
71	BL	BL	BL	BL	BL	BL	ND*	Pass
72	BL	BL	BL	BL	ND*	ND*	ND*	Pass
73	BL	BL	BL	BL	--	--	--	Pass
74	BL	BL	BL	BL	BL	BL	ND*	Pass
75	BL	BL	BL	BL	BL	BL	ND*	Pass
76	BL	BL	BL	BL	BL	BL	ND*	Pass
77	BL	BL	BL	BL	ND*	ND*	ND*	Pass
78	BL	BL	BL	BL	--	--	--	Pass
79	BL	BL	BL	Negative*	--	--	--	Pass
80	BL	BL	BL	Negative*	--	--	--	Pass
81	BL	BL	BL	BL	BL	BL	ND*	Pass
82	BL	BL	BL	BL	BL	BL	ND*	Pass
83	BL	BL	BL	BL	BL	BL	ND*	Pass
84	BL	BL	BL	BL	--	--	--	Pass
85※2	3.32×10 <sup>4*</sup>	BL	BL	BL	--	--	--	Pass
86※2	2.93×10 <sup>4*</sup>	BL	BL	BL	--	--	--	Pass
87	BL	BL	BL	BL	ND*	ND*	ND*	Pass
88	BL	BL	BL	BL	BL	BL	ND*	Pass
89	BL	BL	BL	BL	BL	BL	ND*	Pass

This document is issued by the Company subject to its General Conditions of Service printed overleaf. Attention is drawn to the limitation of liability. Indemnification and jurisdiction issues defined therein. Any holder of this document is advised that information contained hereon reflects the Company's finding at the time of its intervention only and within the limits of Client's instructions, if any. The Company's sole responsibility transaction documents. This documents cannot be reproduced except in full, without prior written approval of the Company. Any unauthorized alteration, forgery or falsification of the content or appearance of this document is unlawful and offenders may be prosecuted to the fullest extent of law, Unless otherwise stated the results shown in this test report refer only to the sample(s) tested.

Note: All test results are only valid for the samples being tested. This rest report shall not be reproduced except in full, without the written approval of the testing laboratory The Dates for internal quality control data reference only

Address: 2<sup>nd</sup> Floor, Building 4, No.158, Jinfeng Road, Pudong District, Shanghai, China (201201) Tel: +86 21 5838-0071 Fax: +86 21 5838-0083

Component No.	Pb	Cd	Hg	Cr(VI)	PBBs	PBEDs	DBP, BBP, DEHP, DIBP	Conclusion
90	BL	BL	BL	BL	BL	BL	ND*	Pass
91	BL	BL	BL	BL	BL	BL	ND*	Pass
92	BL	BL	BL	BL	BL	BL	ND*	Pass
93	ND*	ND*	BL	BL	--	--	--	Pass
94	BL	BL	BL	BL	--	--	--	Pass
95	BL	BL	BL	BL	BL	BL	ND*	Pass
96	BL	BL	BL	BL	BL	BL	ND*	Pass
97	BL	BL	BL	BL	--	--	--	Pass
98	BL	BL	BL	BL	BL	BL	ND*	Pass
99	BL	BL	BL	BL	BL	BL	ND*	Pass
100※2★1	3.54×10 <sup>4</sup> *	BL	BL	BL	--	--	--	Pass
101	BL	BL	BL	BL	BL	BL	ND*	Pass
102	BL	BL	BL	BL	--	--	--	Pass
103	BL	BL	BL	BL	BL	BL	ND*	Pass
104	BL	BL	BL	BL	BL	BL	ND*	Pass
105	BL	BL	BL	BL	BL	BL	ND*	Pass
106	BL	BL	BL	BL	BL	BL	ND*	Pass
107	BL	BL	BL	ND*	BL	BL	ND*	Pass
108	BL	BL	BL	BL	BL	BL	ND*	Pass
109	BL	BL	BL	BL	BL	BL	ND*	Pass
110	BL	BL	BL	BL	--	--	--	Pass
111	BL	BL	BL	BL	BL	BL	ND*	Pass
112	BL	BL	BL	BL	BL	BL	ND*	Pass
113	BL	BL	BL	BL	BL	BL	ND*	Pass
114	BL	BL	BL	BL	BL	BL	ND*	Pass
115	BL	BL	BL	BL	BL	BL	ND*	Pass
116	BL	BL	BL	BL	BL	BL	ND*	Pass
117	BL	BL	BL	BL	BL	BL	ND*	Pass
118	BL	BL	BL	BL	--	--	--	Pass
119	BL	BL	BL	Negative*	--	--	--	Pass

This document is issued by the Company subject to its General Conditions of Service printed overleaf. Attention is drawn to the limitation of liability. Indemnification and jurisdiction issues defined therein. Any holder of this document is advised that information contained hereon reflects the Company's finding at the time of its intervention only and within the limits of Client's instructions, if any. The Company's sole responsibility transaction documents. This documents cannot be reproduced except in full, without prior written approval of the Company. Any unauthorized alteration, forgery or falsification of the content or appearance of this document is unlawful and offenders may be prosecuted to the fullest extent of law, Unless otherwise stated the results shown in this test report refer only to the sample(s) tested.

Note: All test results are only valid for the samples being tested. This rest report shall not be reproduced except in full, without the written approval of the testing laboratory The Dates for internal quality control data reference only

Component No.	Pb	Cd	Hg	Cr(VI)	PBBs	PBEDs	DBP, BBP, DEHP, DIBP	Conclusion
120	BL	BL	BL	Negative*	--	--	--	Pass

### Note

- (1) Unit:mg/Kg, mg/Kg  $\approx$  ppm=parts per million
- (2) --= Not applicable.
- (3) XRF Screening limits in mg/Kg for regulated elements in different materials(Table A.2 of Annex A to IEC62321-3-1:2013)

Element	Polymers	Metals	Composite Material
<b>Cd</b>	$BL \leq (70-3\sigma) < X < (130+3\sigma) \leq OL$	$BL \leq (70-3\sigma) < X < (130+3\sigma) \leq OL$	$LOD < X < (150+3\sigma) \leq OL$
<b>Pb</b>	$BL \leq (700-3\sigma) < X < (1300+3\sigma) \leq OL$	$BL \leq (700-3\sigma) < X < (1300+3\sigma) \leq OL$	$BL \leq (500-3\sigma) < X < (1500+3\sigma) \leq OL$
<b>Hg</b>	$BL \leq (700-3\sigma) < X < (1300+3\sigma) \leq OL$	$BL \leq (700-3\sigma) < X < (1300+3\sigma) \leq OL$	$BL \leq (500-3\sigma) < X < (1500+3\sigma) \leq OL$
<b>Br</b>	$BL \leq (300-3\sigma) < X$	Not applicable	$BL \leq (250-3\sigma) < X$
<b>Cr</b>	$BL \leq (700-3\sigma) < X$	$BL \leq (700-3\sigma) < X$	$BL \leq (500-3\sigma) < X$

BL = Below Limit,

OL = Over Limit,

LOD = Limit Of Detection,

$3\sigma$  = Repeability of the analyser at the action level.

- (4) ND=Not detected, the test result(s) is/are below the method detection limit as for wet chemistry method.
- (5) PBB=Polybrominated Biphenyls (PBBs) means Monobromobiphenyls, Dibromobiphenyls, Tribromobiphenyls, Tetrabromobiphenyls, Pentabromobiphenyls, Hexabromobiphenyls, Heptabromobiphenyls, Octabromobiphenyls, Nonabromobiphenyls and Decabromobiphenyls  
PBDE=Polybrominated Diphenyl Ethers (PBDEs) means Monobromodiphenyl ethers, Dibromodiphenyl ethers, Tribromodiphenyl ethers, Tetrabromodiphenyl ethers, Pentabromodiphenyl ethers, Hexabromodiphenyl ethers, Heptabromodiphenyl ethers, Octabromodiphenyl ethers, Nonabromodiphenyl ethers, Decabromodiphenyl ethers
- (6) \*=denotes as reported result(s) was(were) performed by wet chemistry method. Others were screened by XRF. For XRF screening, the result(s) of Cr(VI) was(were) reported as total chromium and the result(s) of PBBs and PBDEs was(were) reported as total bromine. Also, the XRF result(s) may be different to the actual content based

This document is issued by the Company subject to its General Conditions of Service printed overleaf. Attention is drawn to the limitation of liability, Indemnification and jurisdiction issues defined therein. Any holder of this document is advised that information contained hereon reflects the Company's finding at the time of its intervention only and within the limits of Client's instructions, if any. The Company's sole responsibility transaction documents. This documents cannot be reproduced except in full, without prior written approval of the Company. Any unauthorized alteration, forgery or falsification of the content or appearance of this document is unlawful and offenders may be prosecuted to the fullest extent of law, Unless otherwise stated the results shown in this test report refer only to the sample(s) tested.

Note: All test results are only valid for the samples being tested. This rest report shall not be reproduced except in full, without the written approval of the testing laboratory The Dates for internal quality control data reference only

on various factors including, but not limited to, sample size, thickness, area, non-uniformity composition, surface flatness and so on.

- (7) Restricted substances referred to in Article 4(1) and maximum concentration values tolerated by weight in homogeneous materials

**Lead (Pb, 0,1 %)**

**Mercury (Hg, 0,1 %)**

**Cadmium (Cd, 0,01 %)**

**Hexavalent chromium (Cr(VI), 0,1 %)**

**Polybrominated biphenyls (sum of PBB) (0,1 %)**

**Polybrominated diphenyl ethers (sum of PBDE) (0,1 %)**

**Bis(2-ethylhexyl) phthalate (DEHP) (0,1 %)**

**Butyl benzyl phthalate (BBP) (0,1 %)**

**Dibutyl phthalate (DBP) (0,1 %)**

**Diisobutyl phthalate (DIBP) (0,1 %)**

The restriction of DEHP, BBP, DBP and DIBP shall apply to medical devices, including in vitro medical devices, and monitoring and control instruments, including industrial monitoring and control instruments, from 22 July 2021.

The restriction of DEHP, BBP, DBP and DIBP shall not apply to cables or spare parts for the repair, the reuse, the updating of functionalities or upgrading of capacity of EEE placed on the market before 22 July 2019, and of medical devices, including in vitro medical devices, and monitoring and control instruments, including industrial monitoring and control instruments, placed on the market before 22 July 2021.

The restriction of DEHP, BBP and DBP shall not apply to toys which are already subject to the restriction of DEHP, BBP and DBP through entry 51 of Annex XVII to Regulation (EC) No 1907/2006.

- (8) When Cr(VI) in a sample is detected below the  $0.10 \mu\text{g}/\text{cm}^2$ , the sample is negative for Cr(VI). When Cr(VI) is detected above  $0.13 \mu\text{g}/\text{cm}^2$ , the sample is positive for the presence of Cr(VI) in the coating layer. A "grey zone" between  $0.10 \mu\text{g}/\text{cm}^2$  and  $0.13 \mu\text{g}/\text{cm}^2$  has been established as "inconclusive" to reduce inconsistent results due to unavoidable coating variations. In this case, additional testing may be necessary to confirm the presence of Cr(VI).
- (9) ※1 = As per client's declaration, Lead in component No. 52 was exempted from European Council Directive 2011/65/EU, by its Annex III Clause 7(c)-I "Electrical and electronic components containing lead in a glass or ceramic other than dielectric ceramic in capacitors".
- (10) ※2 = As per client's declaration, Lead in component No. 6, 62, 85, 86 and 100 were exempted from European Council Directive 2011/65/EU, by its Annex III Clause 6(c) "Copper alloy containing up to 4 % lead by weight".
- (11) ★1=The test data of the first substitute, which submitted by supplier on Sep.03, 2019, was listed above.

This document is issued by the Company subject to its General Conditions of Service printed overleaf. Attention is drawn to the limitation of liability, Indemnification and jurisdiction issues defined therein. Any holder of this document is advised that information contained hereon reflects the Company's finding at the time of its intervention only and within the limits of Client's instructions, if any. The Company's sole responsibility transaction documents. This documents cannot be reproduced except in full, without prior written approval of the Company. Any unauthorized alteration, forgery or falsification of the content or appearance of this document is unlawful and offenders may be prosecuted to the fullest extent of law, Unless otherwise stated the results shown in this test report refer only to the sample(s) tested.

Note: All test results are only valid for the samples being tested. This test report shall not be reproduced except in full, without the written approval of the testing laboratory The Dates for internal quality control data reference only

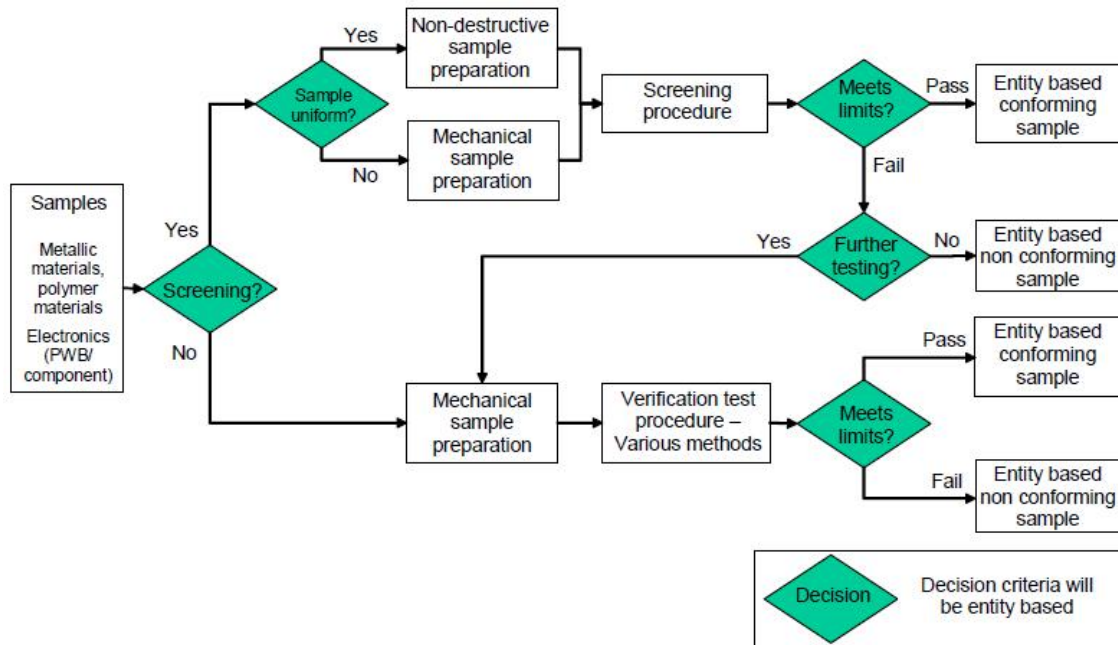
(12) ★2=The test data of the second substitute, which submitted by supplier on Sep.06, 2019, was listed above.

(13) ★3=The test data of the third substitute, which submitted by supplier on Sep.12, 2019, was listed above.

**TEST METHOD**

Test Item	Test Method	Method Detection Limit	Measured Equipment
Pb/Cd/Hg/ Total Cr/Total Br	IEC 62321-3-1: 2013	100mg/Kg	XRF
Lead (Pb),Cadmium (Cd)	IEC 62321-5: 2013	10mg/Kg	ICP-OES
Mercury (Hg)	IEC 62321-4: 2013/AMD1:2017	10mg/Kg	ICP-OES
Hexavalent Chromium (Cr(VI))	IEC 62321-7-1:2015	Note(8)	UV-Vis
	IEC 62321-7-2:2017	8mg/Kg	
Polybrominated Biphenyls (PBBs),Polybrominated Diphenyl Ethers (PBDEs)	IEC 62321-6:2015	10mg/Kg	GC-MS
Phthalates(PAEs)	IEC 62321-8:2017	50mg/Kg	GC-MS

**Flow chart (IEC 62321-1:2013 Figure 1 - Flow chart of the test methods)**



This document is issued by the Company subject to its General Conditions of Service printed overleaf. Attention is drawn to the limitation of liability. Indemnification and jurisdiction issues defined therein. Any holder of this document is advised that information contained hereon reflects the Company's finding at the time of its intervention only and within the limits of Client's instructions, if any. The Company's sole responsibility transaction documents. This documents cannot be reproduced except in full, without prior written approval of the Company. Any unauthorized alteration, forgery or falsification of the content or appearance of this document is unlawful and offenders may be prosecuted to the fullest extent of law, Unless otherwise stated the results shown in this test report refer only to the sample(s) tested.

Note: All test results are only valid for the samples being tested. This rest report shall not be reproduced except in full, without the written approval of the testing laboratory The Dates for internal quality control data reference only



**IEC 62321-3-1: 2013**

Determination of certain substances in electrotechnical products –Part 3-1: Screening – Lead, mercury, cadmium, total chromium and total bromine by X-ray fluorescence spectrometry

**IEC 62321-5: 2013**

Determination of certain substances in electrotechnical products – Part 5: Cadmium, lead and chromium in polymers and electronics and cadmium and lead in metals by AAS, AFS, ICP-OES and ICP-MS

**IEC 62321-4: 2013/AMD1:2017**

Determination of certain substances in electrotechnical products – Part 4:Mercury in polymers, metals and electronics by CV-AAS, CV-AFS, ICP-OES and ICP-MS

**IEC 62321-7-1:2015**

Determination of certain substances in electrotechnical products – Part7-1: Hexavalent chromium – Presence of hexavalent chromium (Cr(VI)) in colourless and coloured corrosion-protected coatings on metals by the colorimetric method

**IEC 62321-7-2:2017**

Determination of certain substances in electrotechnical products – Part7-2: Hexavalent chromium – Determination of hexavalent chromium (Cr(VI)) in polymers and electronics by the colorimetric method

**IEC 62321-6:2015**

Determination of certain substances in electrotechnical products – Part 6: Polybrominated biphenyls and polybrominated diphenyl ethers in polymers by gas chromatography – mass spectrometry (GC-MS)

**IEC 62321-8:2017**

Determination of certain substances in electrotechnical products – Part8: Phthalates in polymers by gas chromatography mass spectrometry (GC-MS), gas Chromatography -mass spectrometry using a pyrolyzer/thermal desorption accessory (Py/TD-GC-MS)

\*\*\*\*\* End of Report\*\*\*\*\*

- (1) This report is not affixed to the special seal invalid
- (2) This report shall not be modified, increased, deleted, copied or intercepted, without the approval of Lelangtek.
- (3) The results shown in this report refer only to the lab received sample(s) .
- (4) This report is only for client' s research, teaching, internal quality management, product development, etc. The test results are for reference only.
- (5) If you have any question or concern to this report, please contact us within 10 days, or it will not be accepted out of the time.

This document is issued by the Company subject to its General Conditions of Service printed overleaf. Attention is drawn to the limitation of liability. Indemnification and jurisdiction issues defined therein. Any holder of this document is advised that information contained hereon reflects the Company' s finding at the time of its intervention only and within the limits of Client' s instructions, if any. The Company' s sole responsibility transaction documents. This documents cannot be reproduced except in full, without prior written approval of the Company. Any unauthorized alteration, forgery or falsification of the content or appearance of this document is unlawful and offenders may be prosecuted to the fullest extent of law, Unless otherwise stated the results shown in this test report refer only to the sample(s) tested.

Note: All test results are only valid for the samples being tested. This rest report shall not be reproduced except in full, without the written approval of the testing laboratory The Dates for internal quality control data reference only

Address: 2<sup>nd</sup> Floor, Building 4, No.158, Jinfeng Road, Pudong District, Shanghai, China (201201) Tel: +86 21 5838-0071 Fax: +86 21 5838-0083